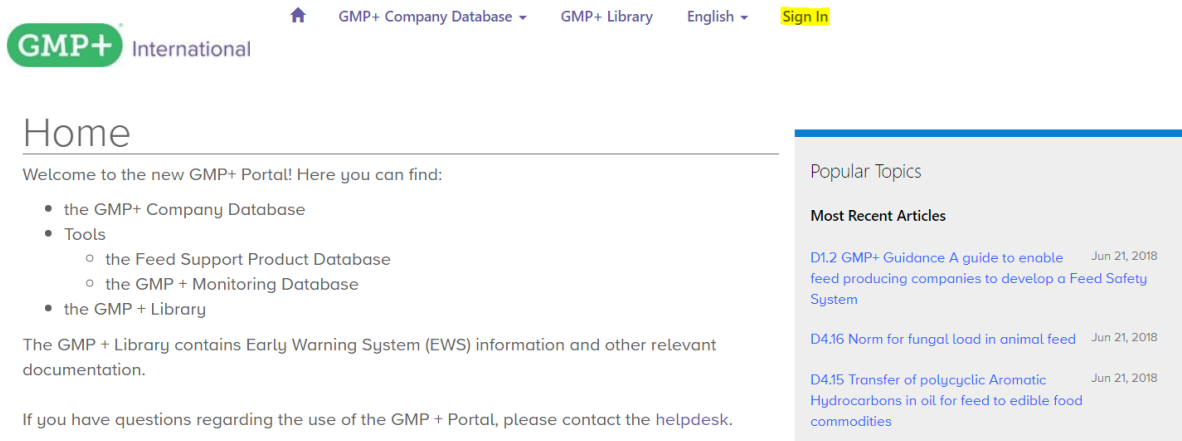


## Manual for login in the GMP+ Database

1. Go to <https://portal.gmpplus.org/>
2. Click on 'sign in'



The screenshot shows the GMP+ International portal homepage. At the top, there is a navigation bar with a home icon, 'GMP+ Company Database', 'GMP+ Library', 'English', and a highlighted 'Sign In' button. The main content area is titled 'Home' and includes a welcome message: 'Welcome to the new GMP+ Portal! Here you can find:'. Below this is a bulleted list of resources: 'the GMP+ Company Database', 'Tools' (with sub-items 'the Feed Support Product Database' and 'the GMP + Monitoring Database'), and 'the GMP + Library'. A paragraph follows stating that the GMP + Library contains Early Warning System (EWS) information and other relevant documentation. At the bottom of this section, it says 'If you have questions regarding the use of the GMP + Portal, please contact the helpdesk.' On the right side, there is a sidebar with 'Popular Topics' and 'Most Recent Articles'. The 'Most Recent Articles' section lists three items: 'D1.2 GMP+ Guidance A guide to enable feed producing companies to develop a Feed Safety System' (dated Jun 21, 2018), 'D4.16 Norm for fungal load in animal feed' (dated Jun 21, 2018), and 'D4.15 Transfer of polycyclic Aromatic Hydrocarbons in oil for feed to edible food commodities' (dated Jun 21, 2018).

3. Click on 'forgot your password'

# Sign-in

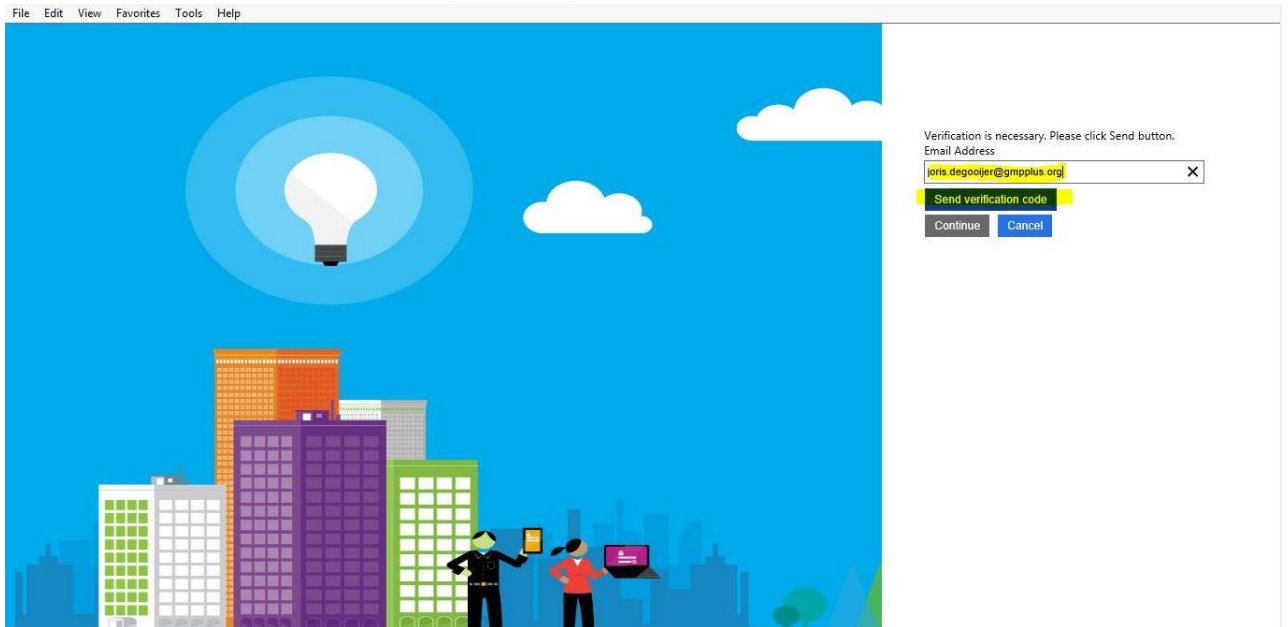
## Sign in with your existing account

**Email Address**

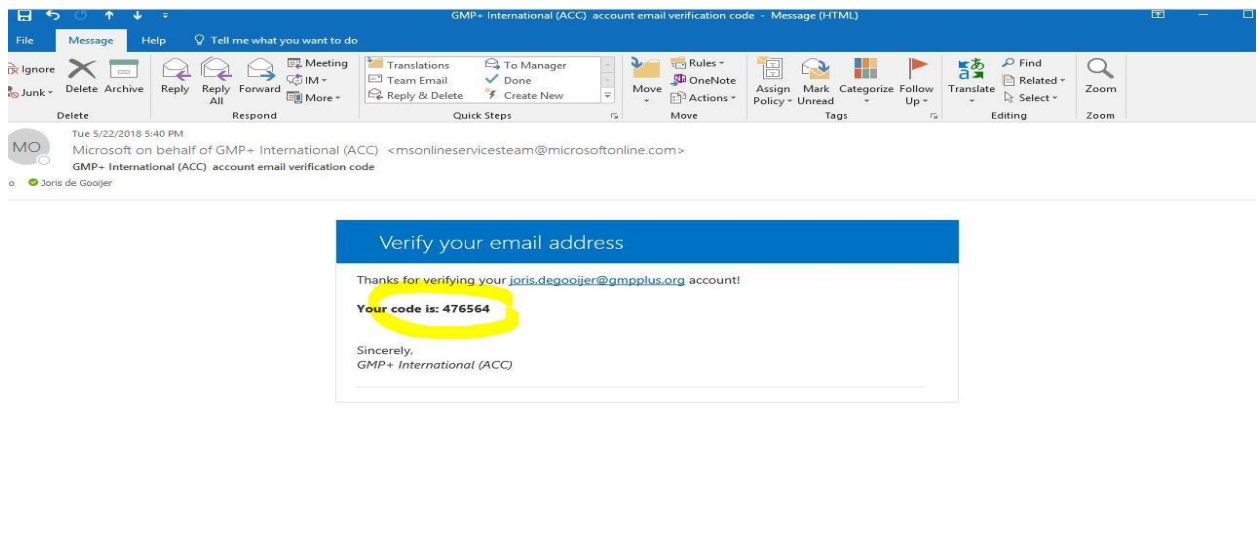
**Password** [Forgot your password?](#)

**Sign in**

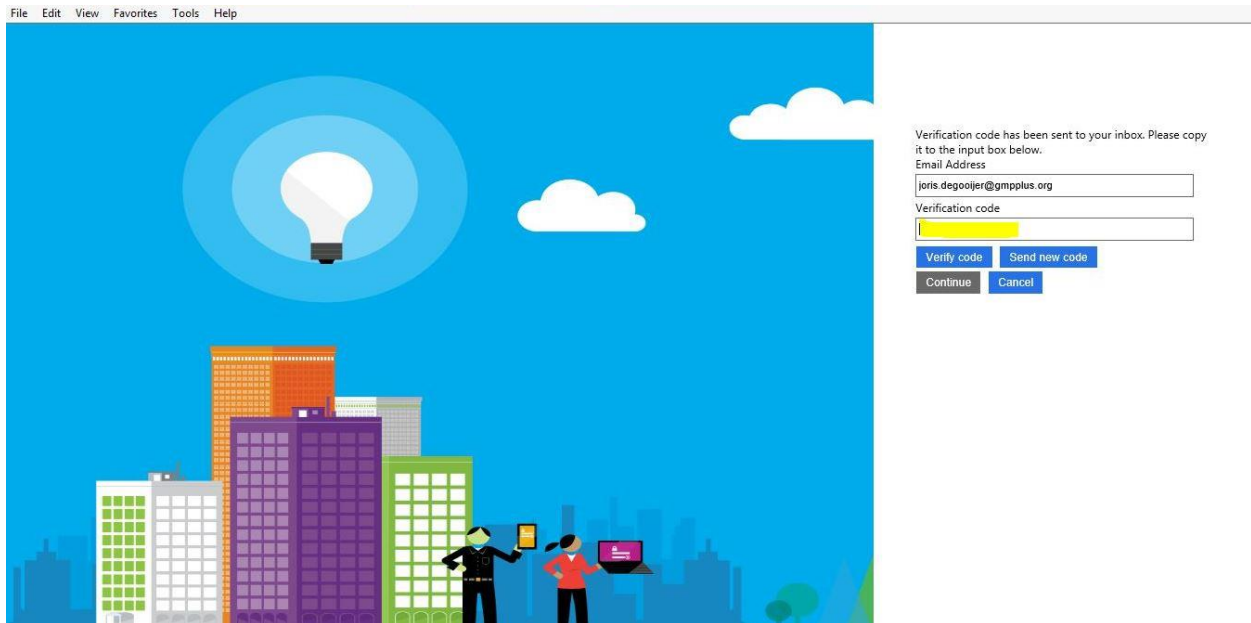
4. Fill in your email address and click on “send verification code”



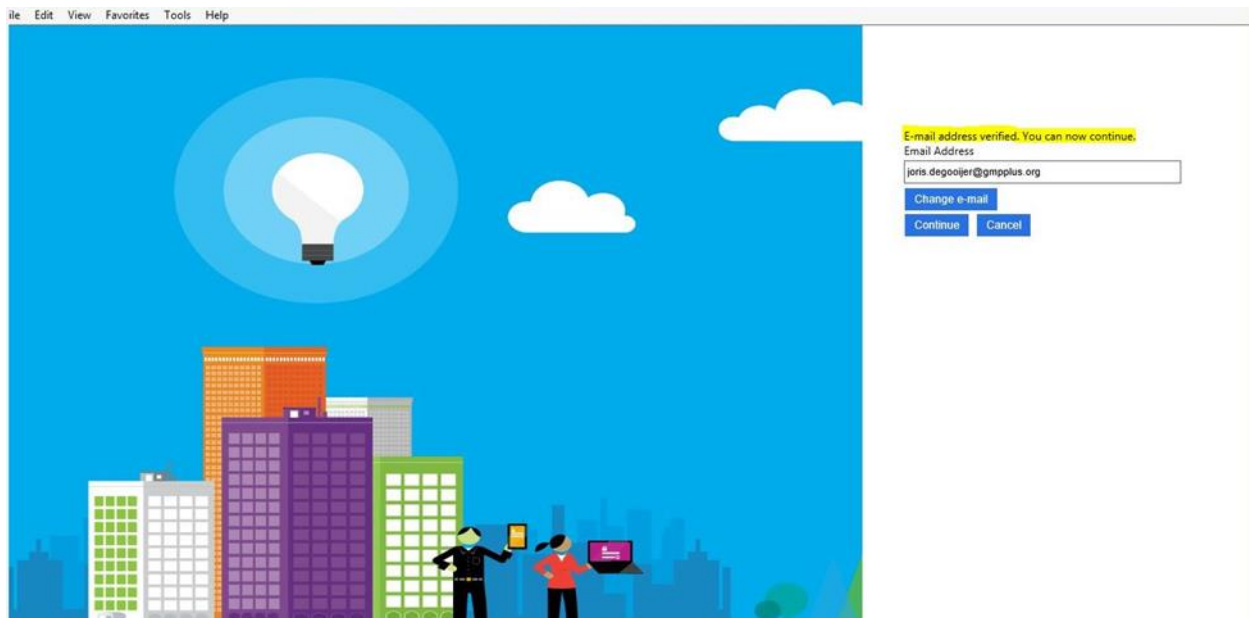
5. Enter the code you received from Microsoft in you email account.



- Please enter the code without any empty spaces in front or after the number!!!! Best is to type in manually. Click 'Verify code'.



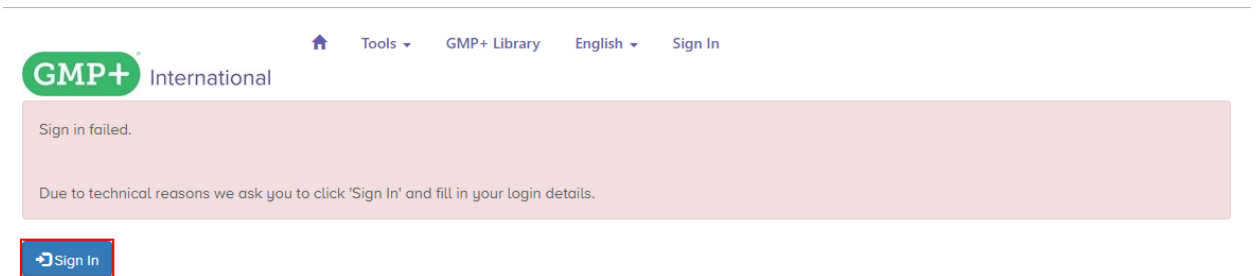
- You will see following message, please click on the button "Continue"



8. You will see following fields please enter two times the same password chosen by yourself and click on the button “Continue”.



9. You will see following message please ignore and click on the button “sign-in”.



10. Please fill in your email address and the password you created in step 8.

